



Montgomery Oaks

Entry Monument and Streetscape Improvements
Design Development Package

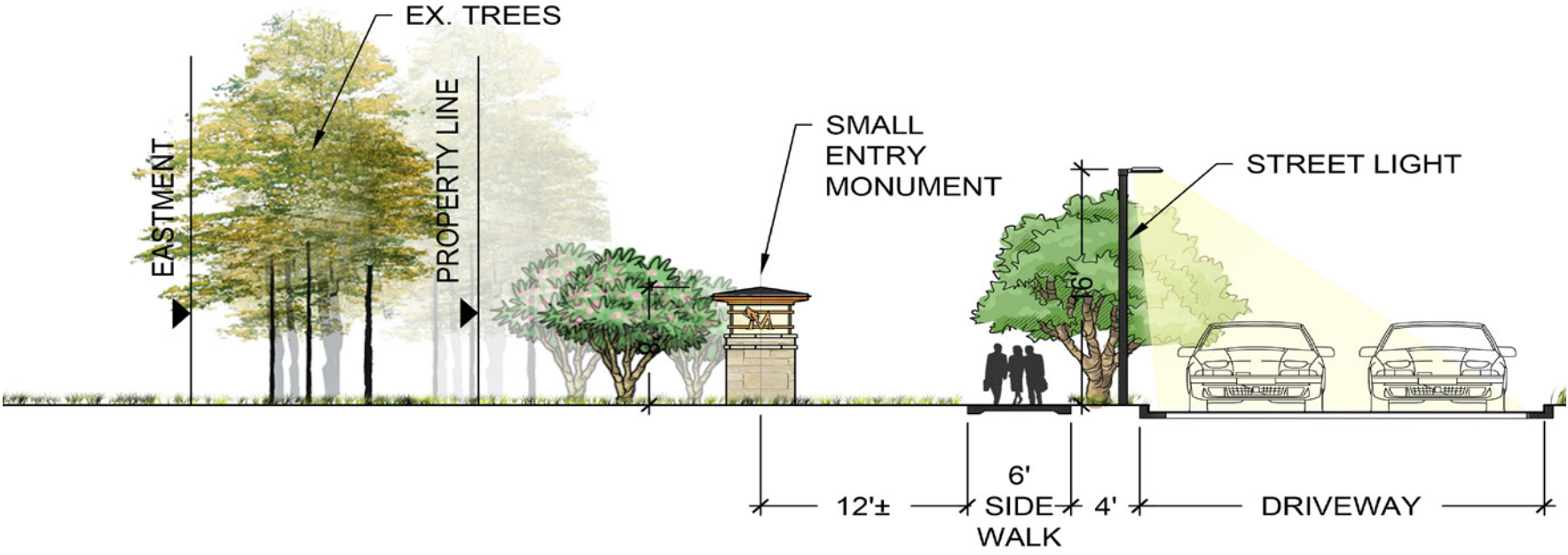


March 26th, 2020

SMALL ENTRY MONUMENT

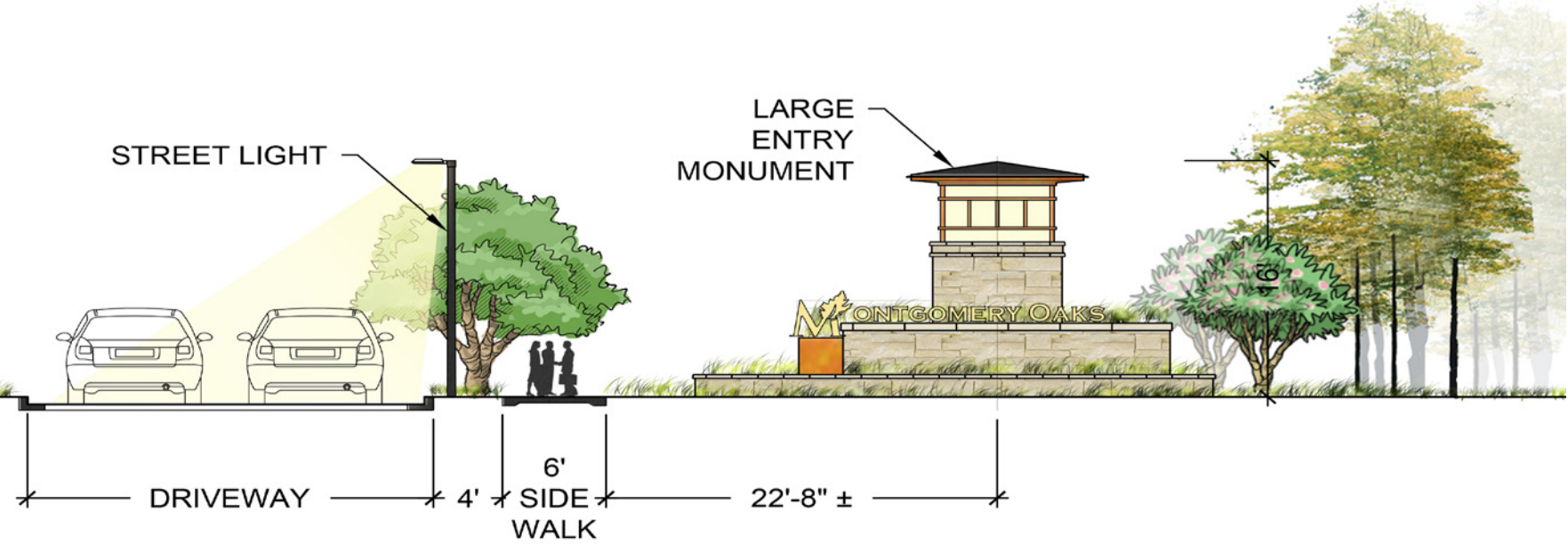


SECTION



ENLARGED PLAN

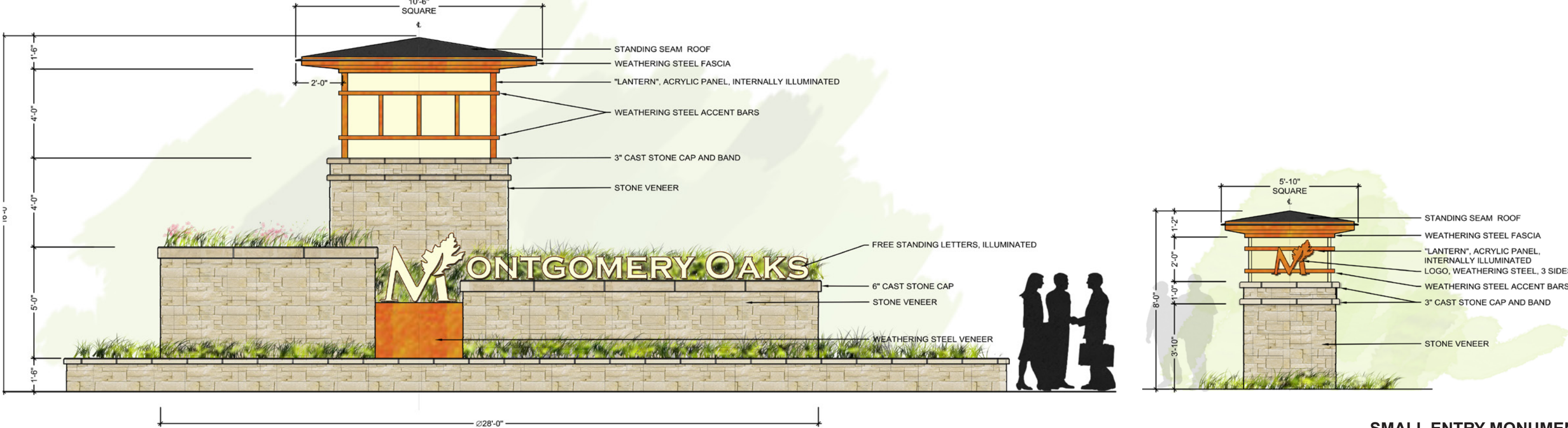
LARGE ENTRY MONUMENT



SECTION

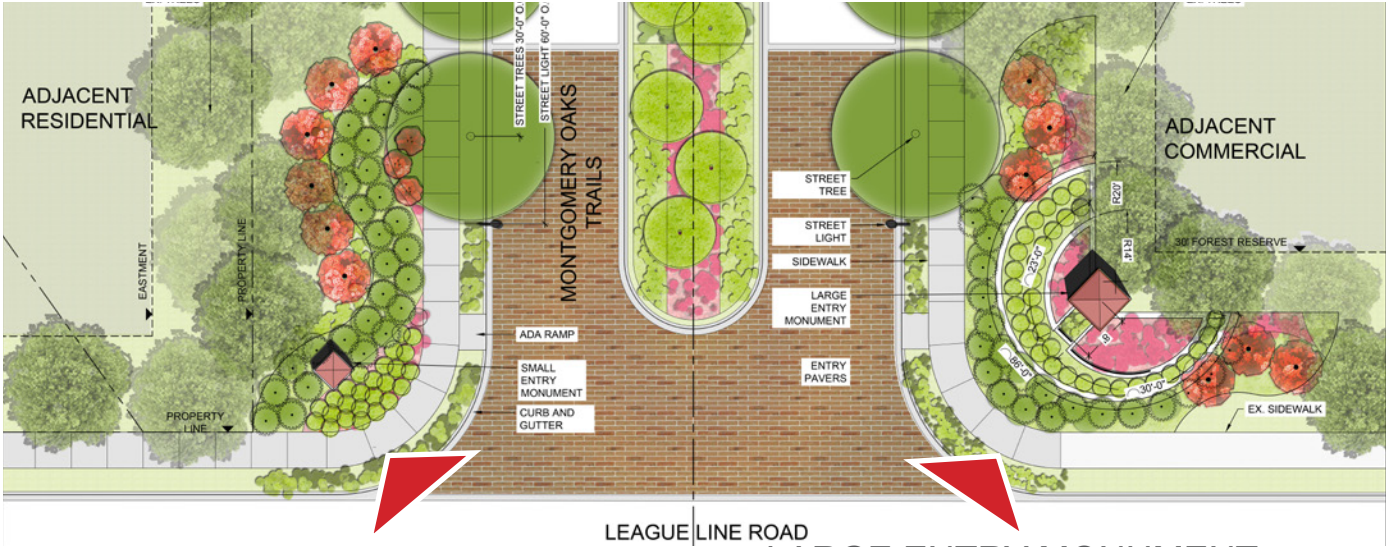
ENLARGED PLAN

ENTRY MONUMENTS DETAILS



LARGE ENTRY MONUMENT ELEVATION

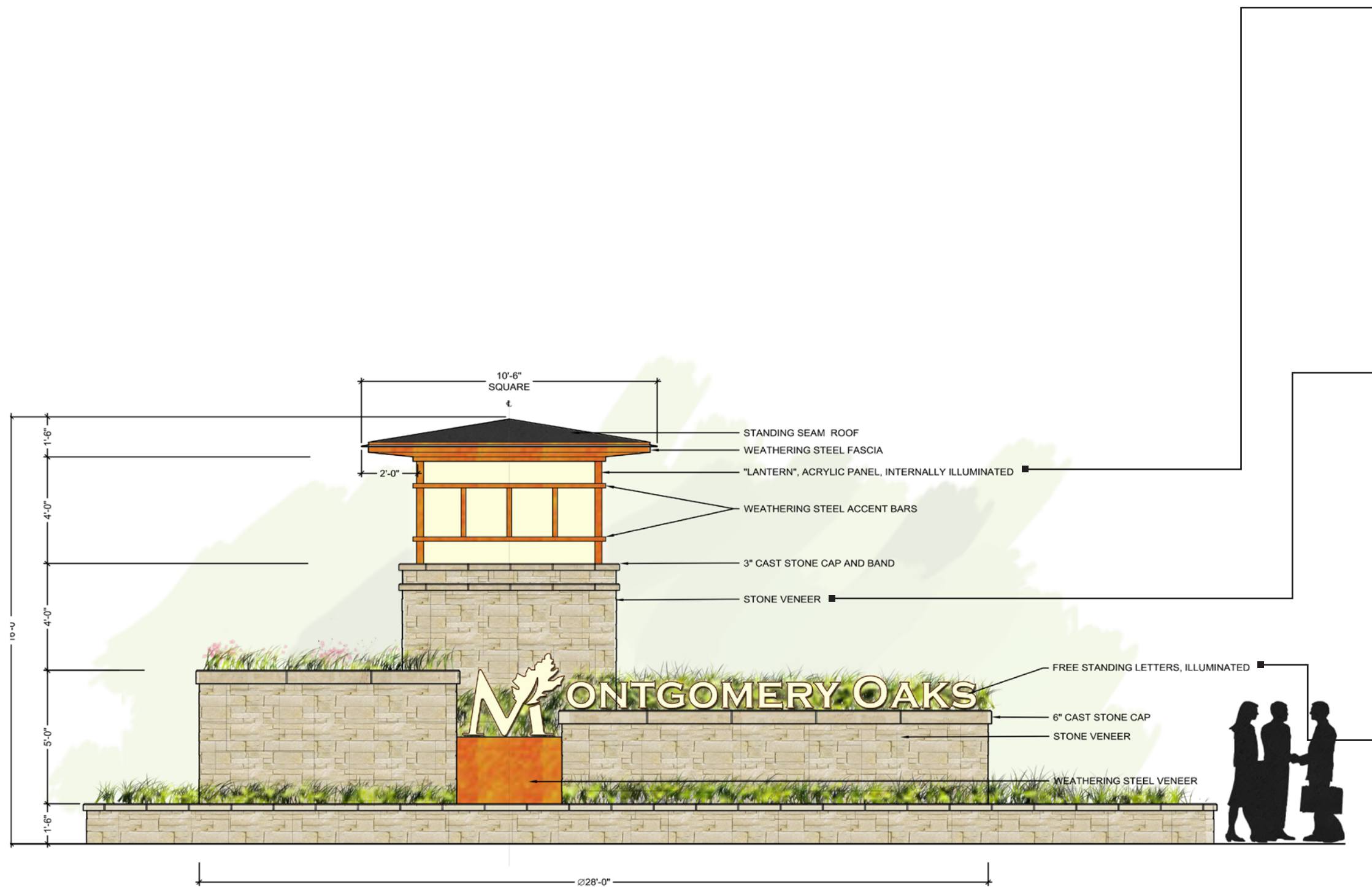
SMALL ENTRY MONUMENT ELEVATION



SMALL ENTRY MONUMENT

LARGE ENTRY MONUMENT

LARGE ENTRY MONUMENT OPTION 1 DETAILS



LARGE ENTRY MONUMENT
ELEVATION

Lantern

- weathering steel frame
- weathering steel roof fascia
- internally illuminated acylic panels

stone veneer+cap stone

- natural stone veneer
- cast stone capstone

internally Illuminated sign

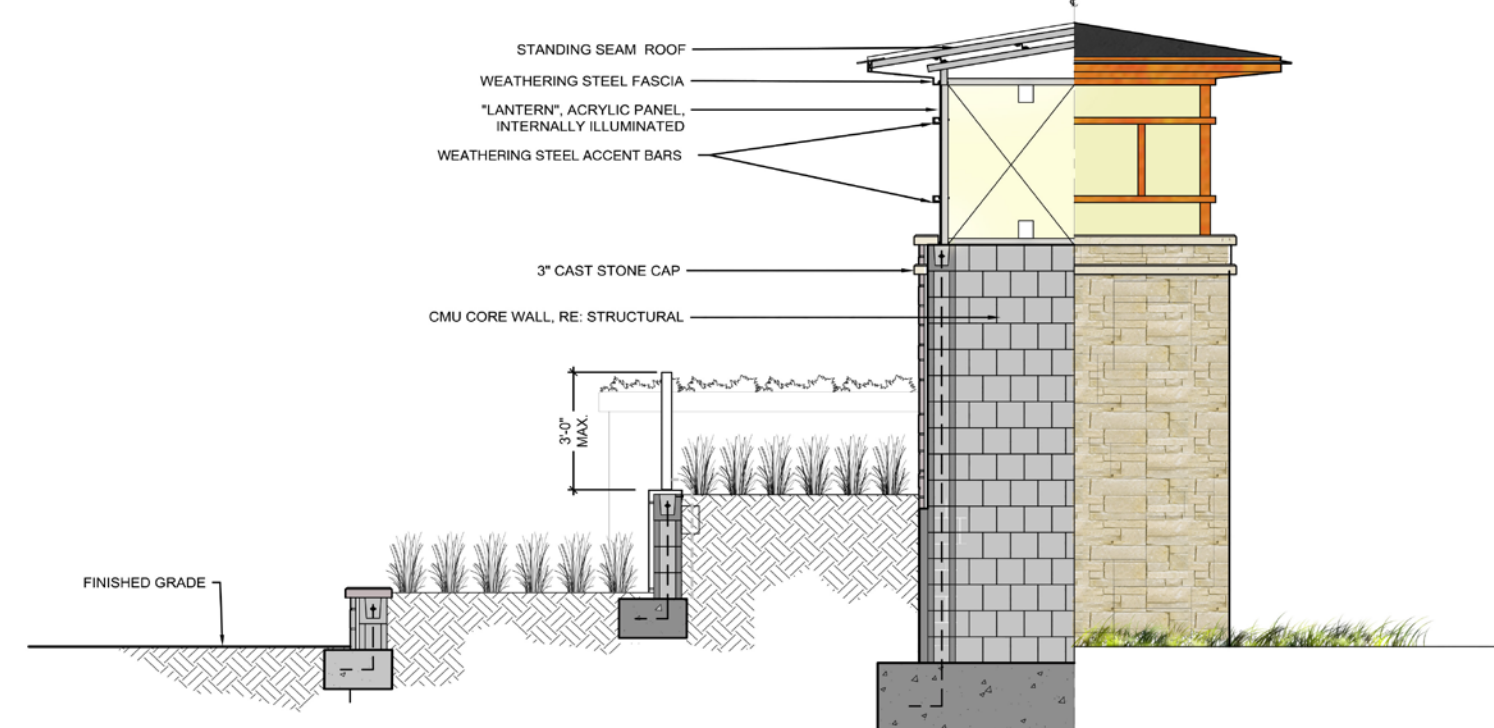
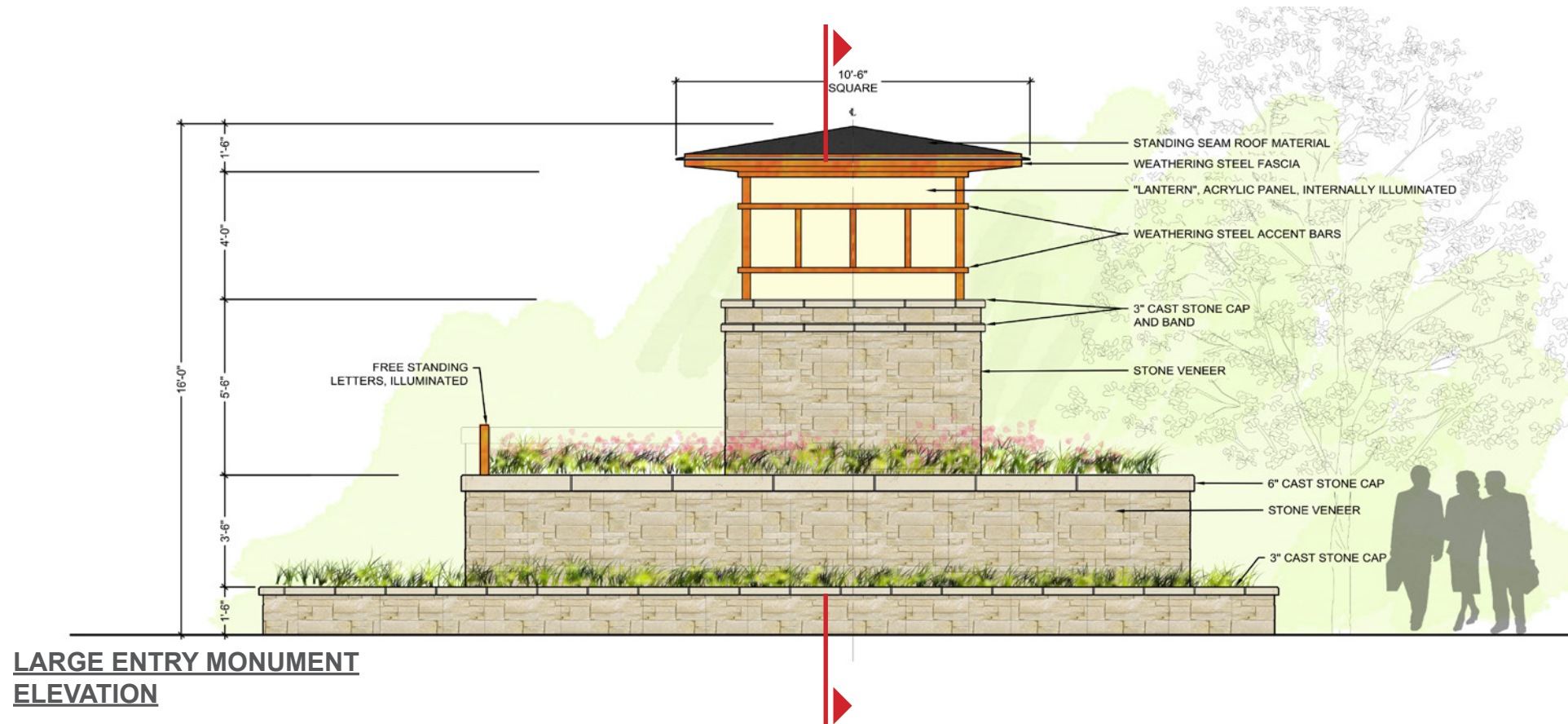
- weathering steel color sides and back
- white acylic panel letters

LARGE ENTRY MONUMENT OPTION 2 DETAILS

Alternative - backlit letters



ENTRY MONUMENT DETAILS - STONE VENEER



Montgomery Oaks Entry Monument and Streetscape Design Development

Option A - Stonewall Gray Ledge

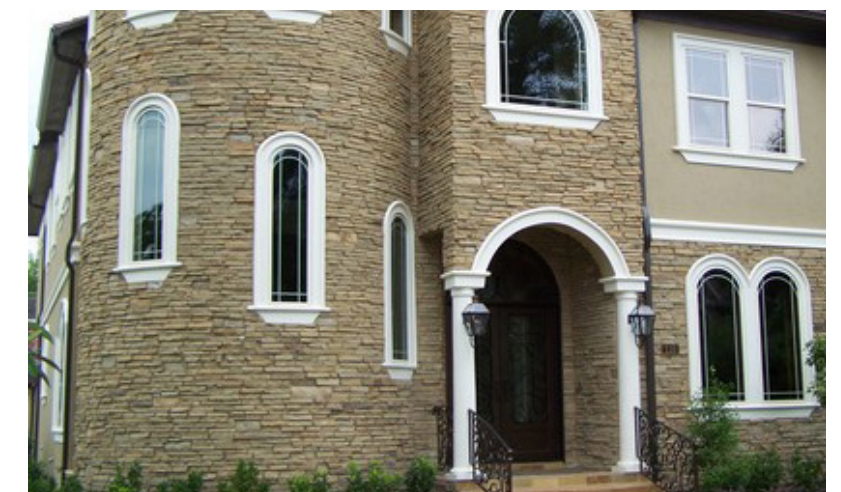
- natural ledgerstone
- 2"-4" in height
- 1 3/4" depth
- color: buff/gray
- price: \$8-\$9 per face sf
- manufacturer: alamo stones <http://alamo-stone.com/>
- cast stone cap



CAST STONE CAP REF IMAGE

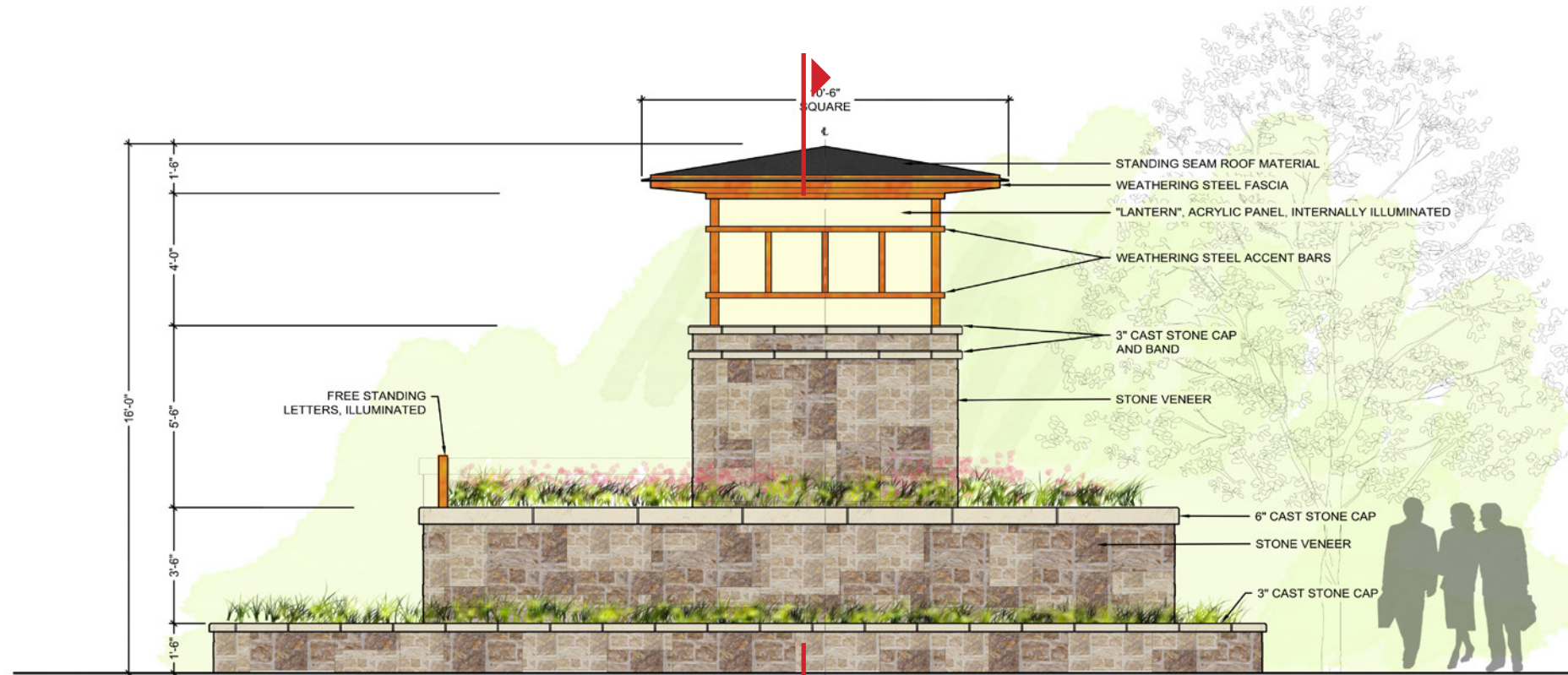


STONE VENEER SAMPLE

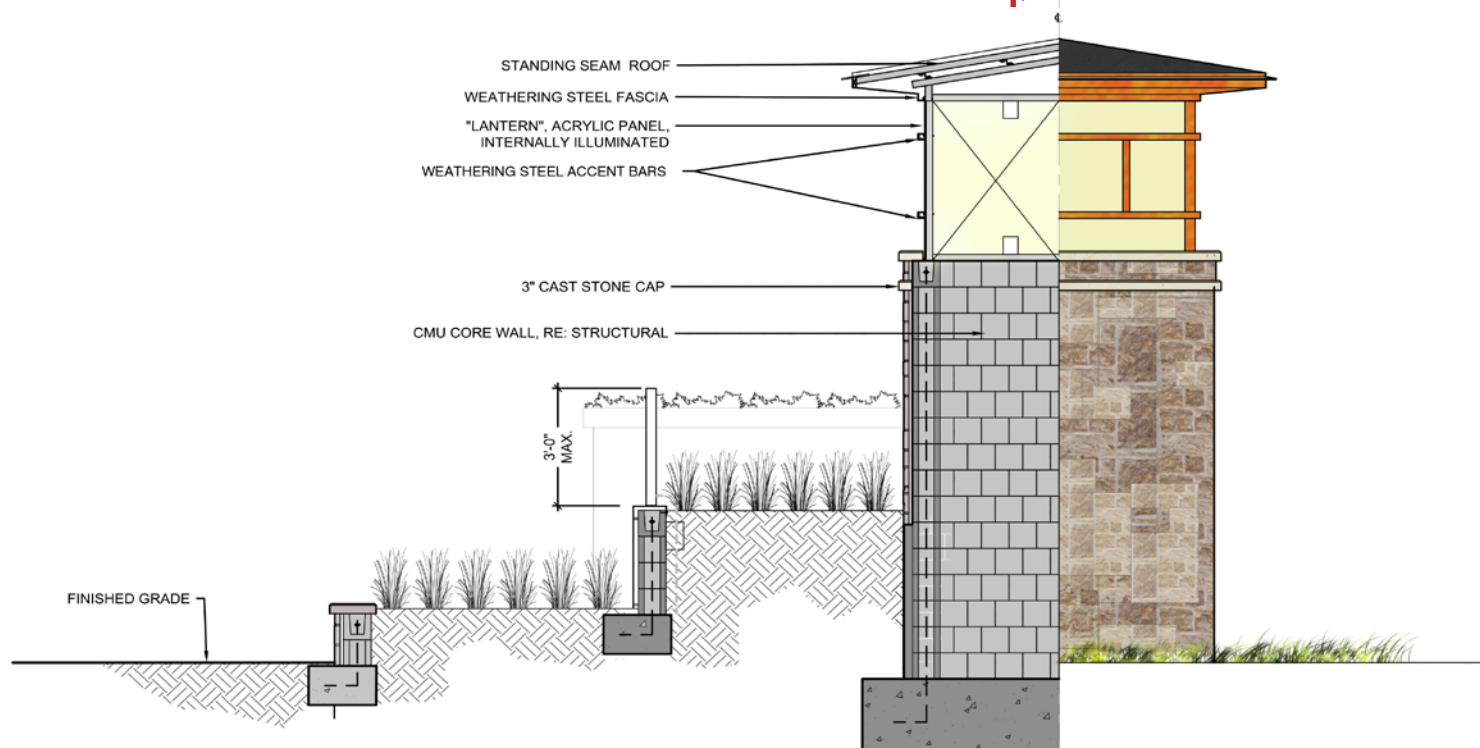


STONE VENEER REF IMAGE

ENTRY MONUMENT DETAILS - STONE VENEER



LARGE ENTRY MONUMENT ELEVATION



LARGE ENTRY MONUMENT SECTION



STONE VENEER SAMPLE

Option B - Dakota Brown Castlerock

- natural chop edges/sawn top&bottom
sawn heights are 4", 6", 8"
- 4"-5" depth
- color: brown/rust/tan
- price: \$9 per face sf (\$353 for a ton which covers 40sf)
- manufacturer: alamo stones <http://alamo-stone.com/>
- cast stone cap

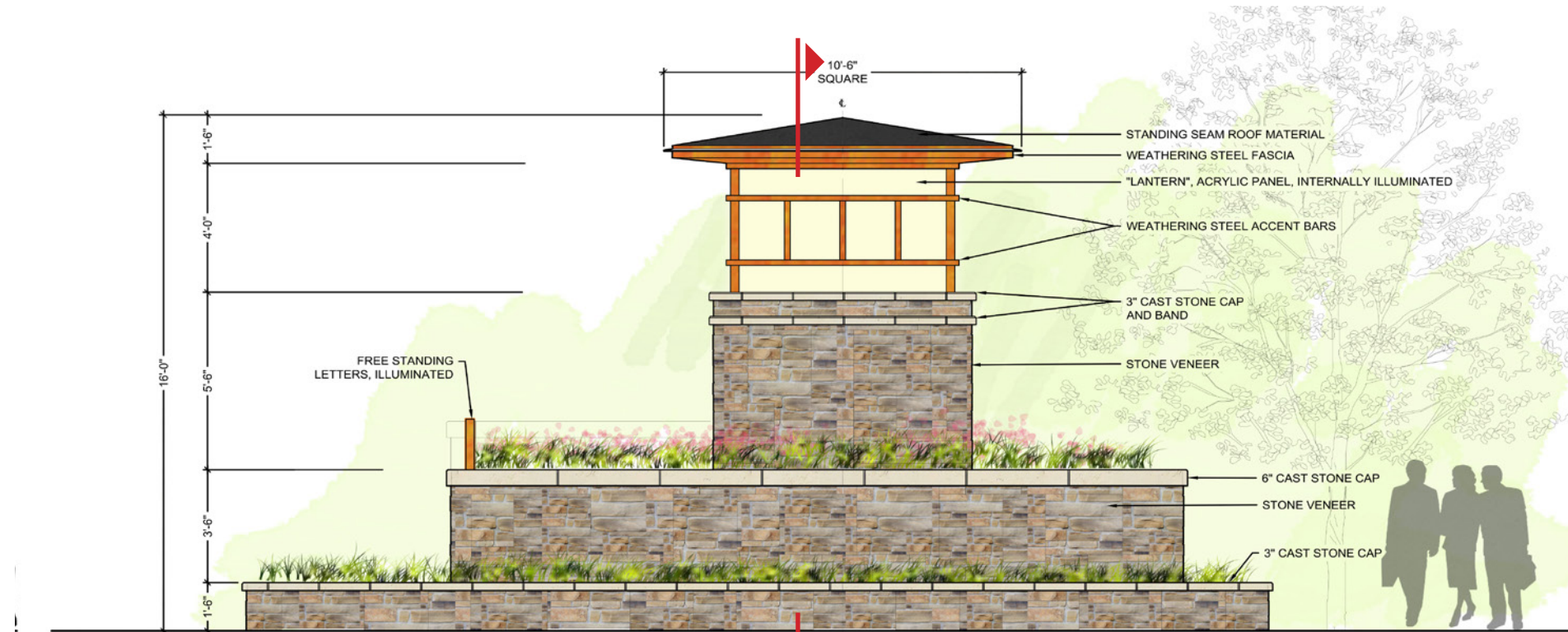


STONE VENEER REF IMAGE

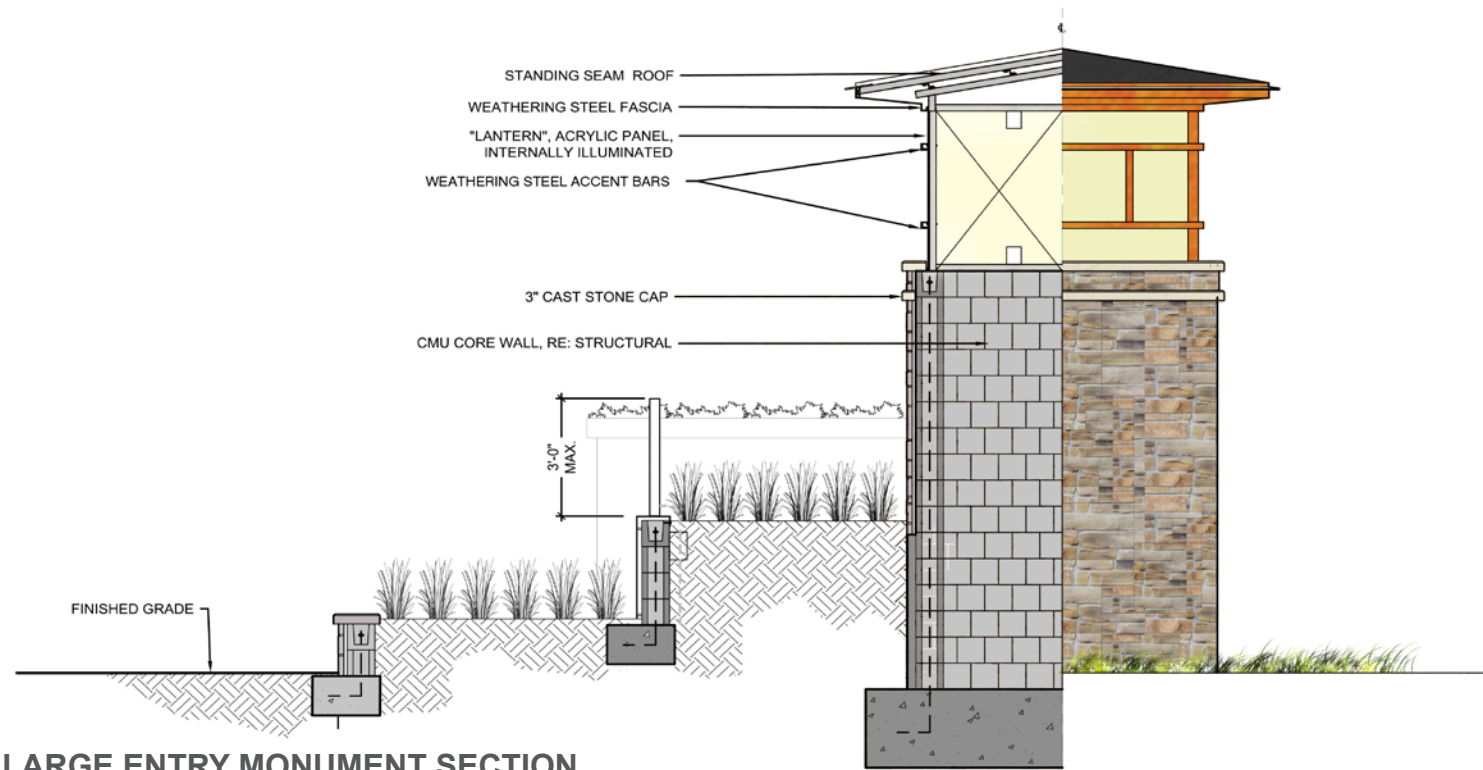


STONE VENEER REF IMAGE

ENTRY MONUMENT DETAILS - STONE VENEER



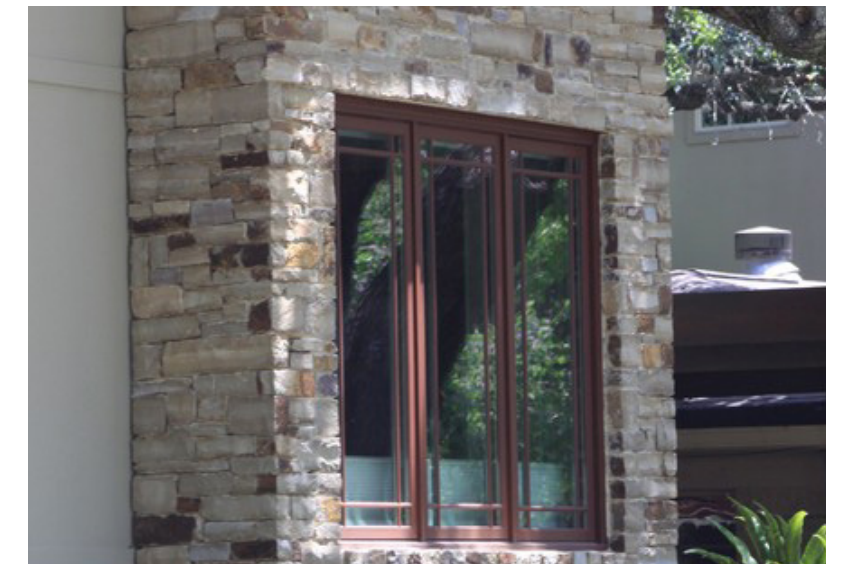
LARGE ENTRY MONUMENT ELEVATION



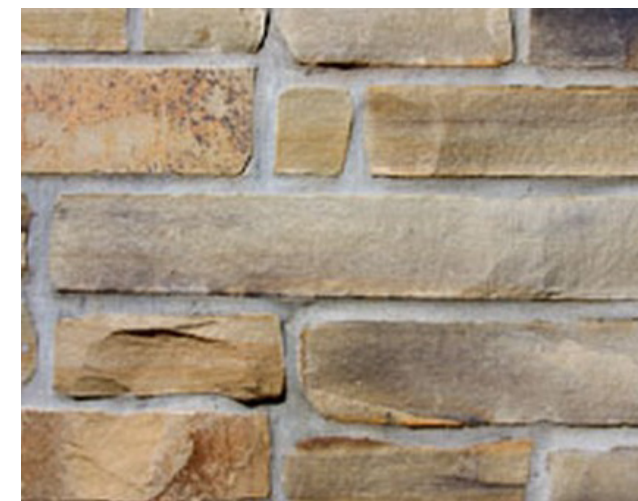
LARGE ENTRY MONUMENT SECTION

Option C - Cheyenne Blend Chop

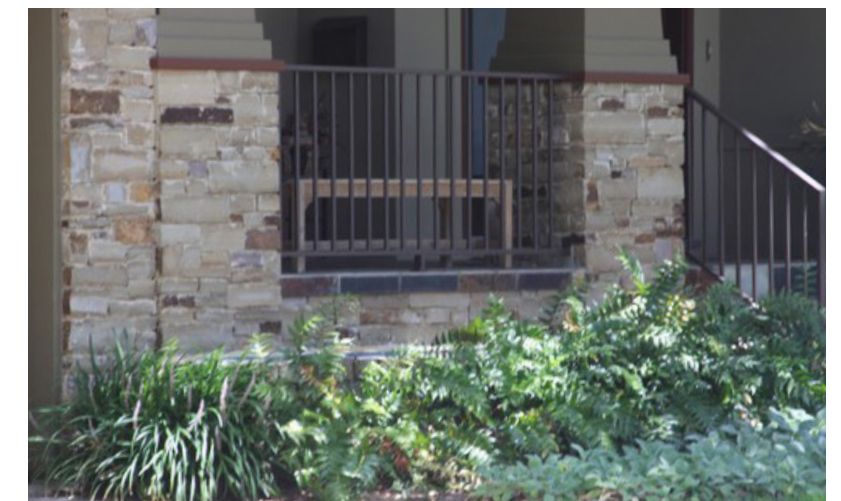
- natural split edges/sawn top&bottom
- 2"- 6" random heights available 4" depth
- color: brown/rust/tan
- price will depend on size needed
- manufacturer: alamo stones <http://alamo-stone.com/>
- cast stone cap



STONE VENEER REF IMAGE



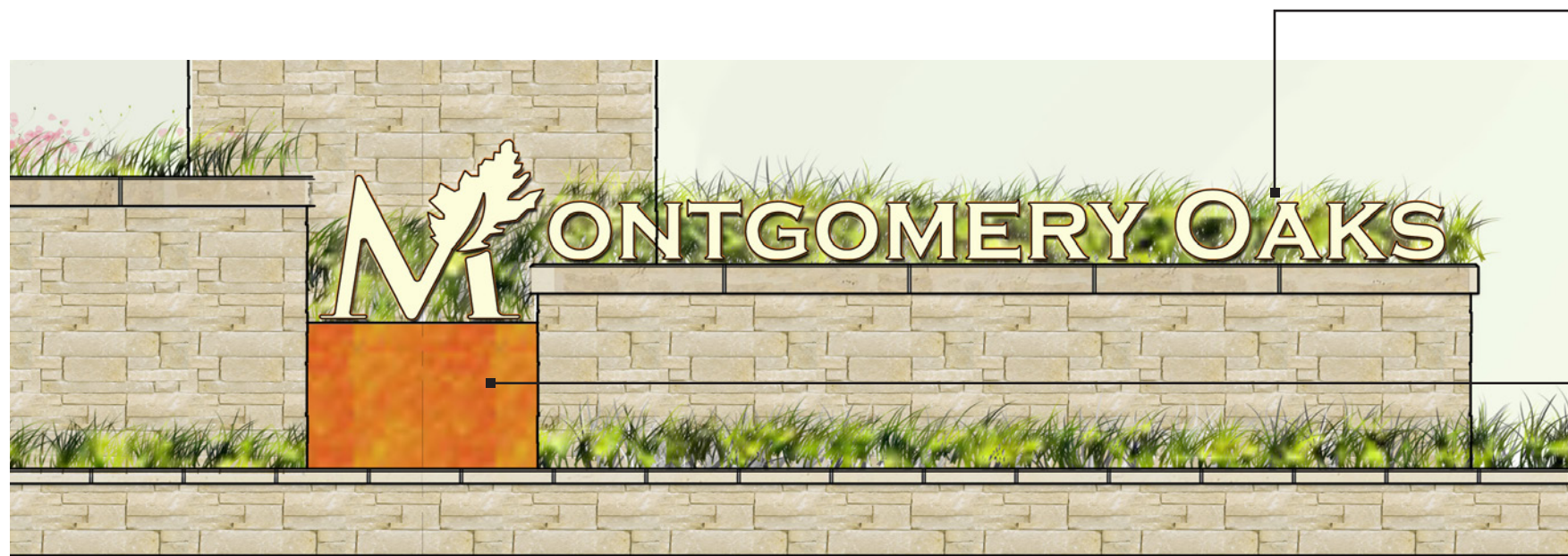
STONE VENEER SAMPLE



STONE VENEER REF IMAGE

ENTRY MONUMENT DETAILS - LOGO

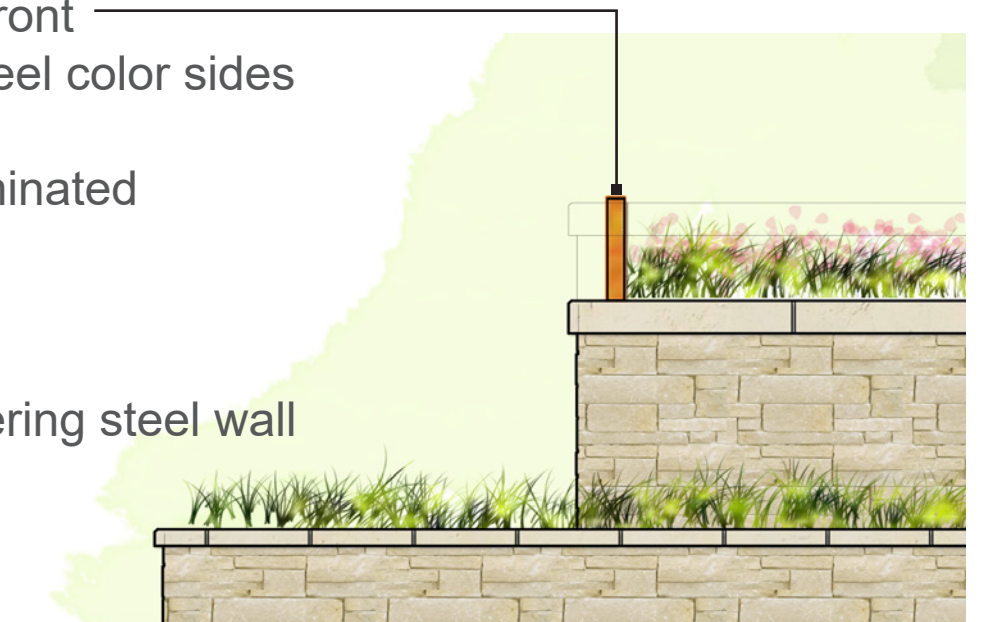
Internally illuminated Channel letters



LARGE ENTRY MONUMENT
SIGN FRONT ELEVATION

- white acrylic front
- weathering steel color sides and back
- internally illuminated
- pin mount

- backlit weathering steel wall



LARGE ENTRY MONUMENT
SIGN SIDE ELEVATION

internally illuminated letters ref image



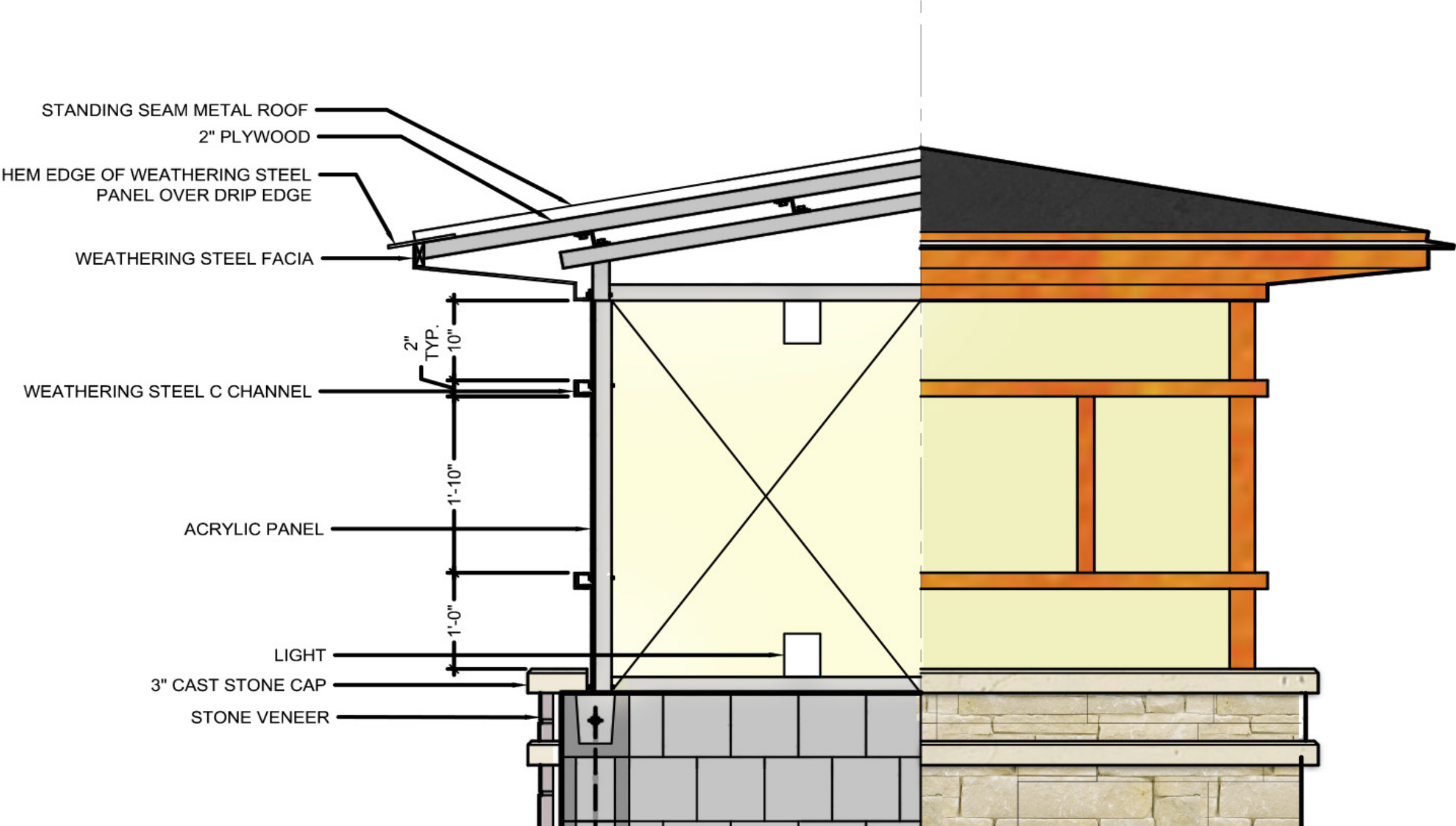
dimensional letters ref image



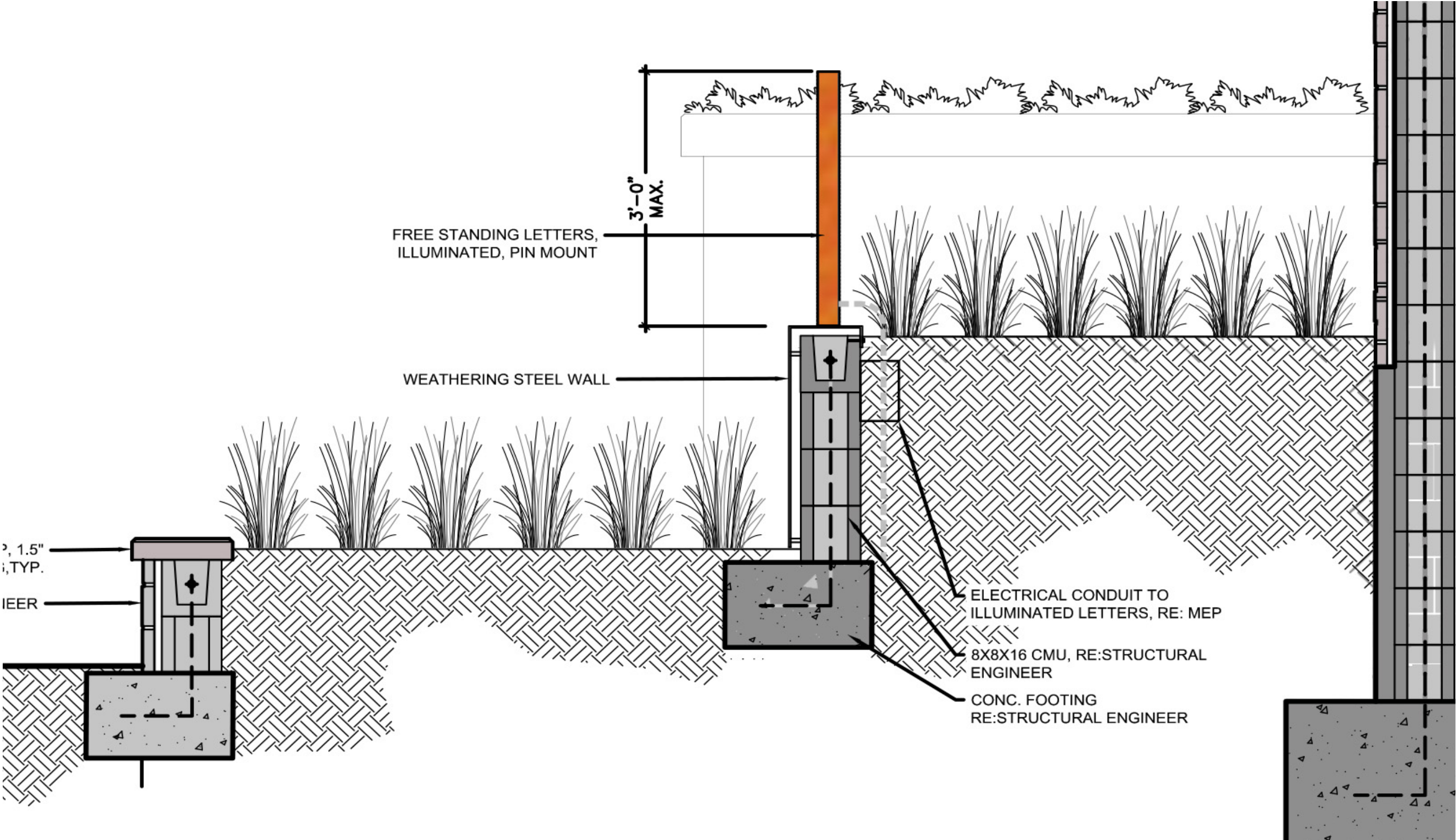
weathering steel wall ref image



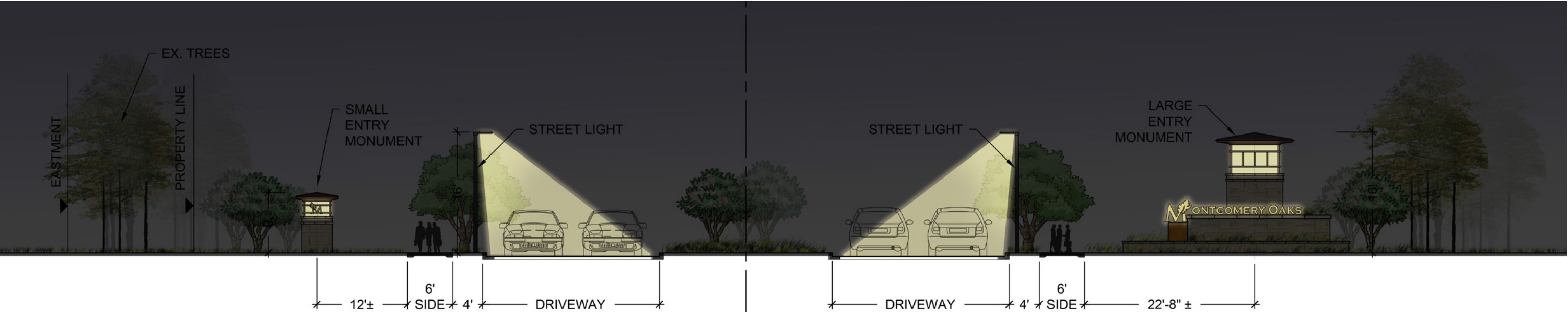
ENTRY MONUMENT DETAILS



ENTRY MONUMENT DETAILS



Streetscape



TYPICAL STREET SECTION



STREET LIGHT PHOTOMETRIC STUDY - PERSPECTIVE

Streetscape

Prefered Lighting fixture

BEGA
model: LED davit arm
luminaires with asym-
metrial wide beam light
distribution
#77897

height: 16 ft
spacing: 60 ft o.c.

LED davit arm luminaires with asymmetrical wide beam light distribution

Housing: Die-cast aluminum housing and slip fitter. Slip fits 1 5/8" O.D. tenon, secures to pole lateral stainless steel set screws threaded into stainless steel inserts. Die castings are marine grade, copper free ($\leq 0.3\%$ copper content) A360.0 aluminum alloy.

Enclosure: Faceplate is hinged; constructed of die-cast aluminum with toolless access latch for easy maintenance. Tempered clear safety glass with an anti-reflective coating. Optical reflector of pure anodized aluminum. Fully shielded light distribution for no trespass above horizontal. Fully gasketed for weather tight operation using molded silicone gasket.

Electrical: 50.6W LED luminaire, 57.0 total system watts, -30°C start temperature. Integral 120V through 277V electronic LED driver, 0-10V dimming. Integral surge protection to protect the luminaire against surges rated up to 10kV. LED module(s) are available from factory for easy replacement. Standard LED color temperature is 4000K with a >80 CRI. Available in 3000K (>80 CRI); add suffix K3 to order.

Note: LEDs supplied with luminaire. Due to the dynamic nature of LED technology, LED luminaire data on this sheet is subject to change at the discretion of BEGA-US. For the most current technical data, please refer to www.bega-us.com.

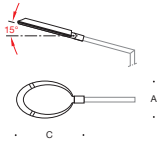
Finish: All BEGA standard finishes are polyester powder coat with minimum 3 mil thickness. Available in four standard BEGA colors: Black (BLK); White (WHT); Bronze (BRZ); Silver (SLV). To specify, add appropriate suffix to catalog number. Custom colors supplied on special order.

CSA certified to U.S. and Canadian standards, suitable for wet locations. Protection class IP66

Weight: 10.5 lbs.

EPA (Effective projection area): 0.32 sq. ft.

Type:
BEGA Product:
Project:
Voltage:
Color:
Options:
Modified:

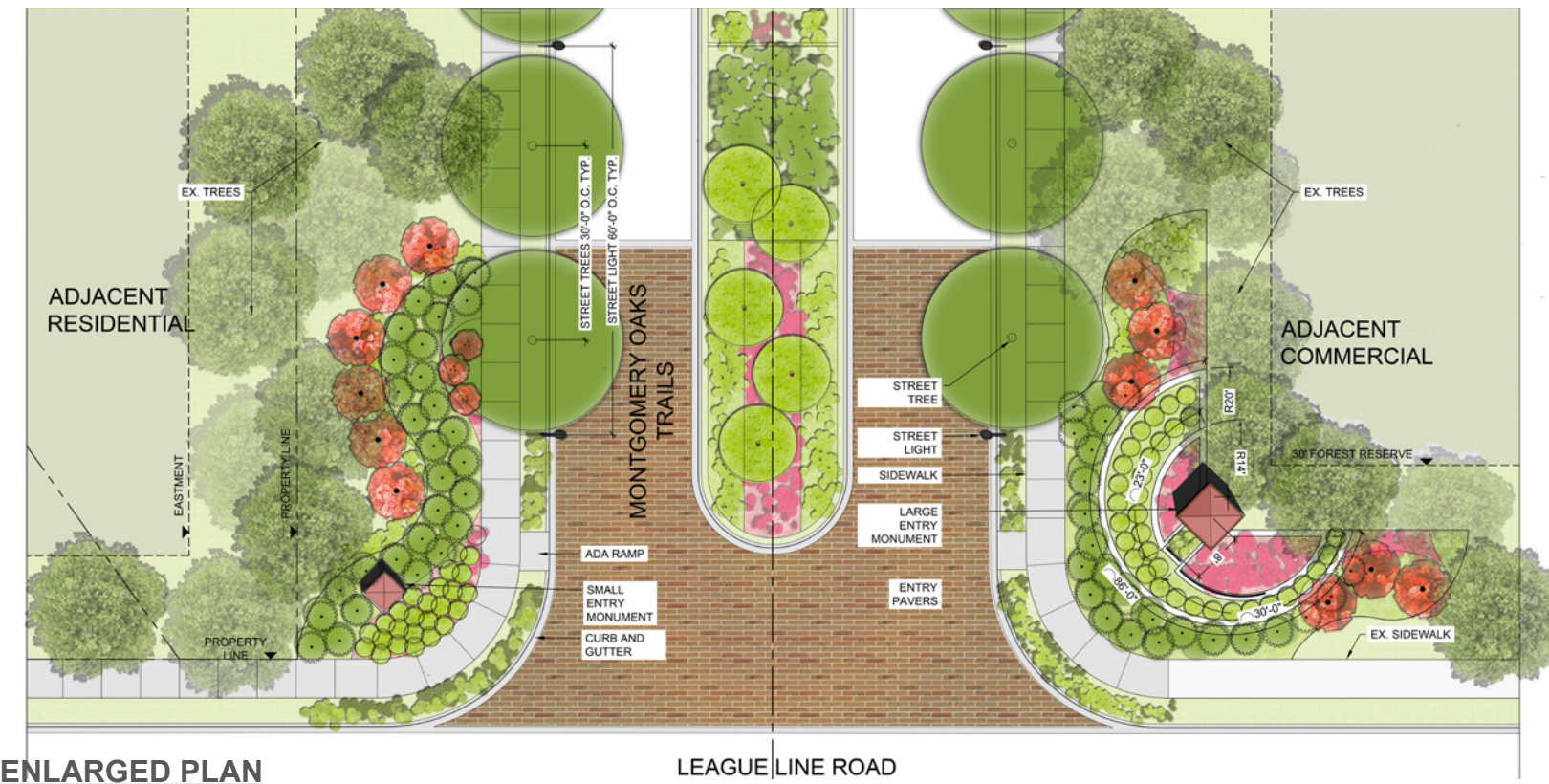


Davit arm luminaires			
	Lamp	A	B C
77897	50.6 W LED	10 1/4	2 1/4 22

BEGA-US 1000 BEGA Way, Carpinteria, CA 93013 (805) 684-0533 FAX (805) 566-9474 www.bega-us.com
©copyright BEGA-US 2016 Updated 01/19



Planting Design



ENLARGED PLAN

SHADE TREE

Ulmus crassifolia
Cedar Elm

ORNAMENTAL TREE

Lagerstroemia indica
Crape Myrtle

Quercus virginiana
Live Oak

Cercis canadensis var. *texana*
Texas Redbud

EVERGREEN SHRUBS



Raphiolepis indica 'clara'
Indian Hawthorn

PERENNIAL SHRUBS



Salvia greggii
Autumn Sage



Rosmarinus officinalis 'Prostratus'
Dwarf Rosemary



Melampodium leucanthum
Blackfoot Daisy



Hesperaloe parviflora 'Brakelights'
Brakelights Red Yucca



Scutellaria suffrutescens
Pink Skullcap

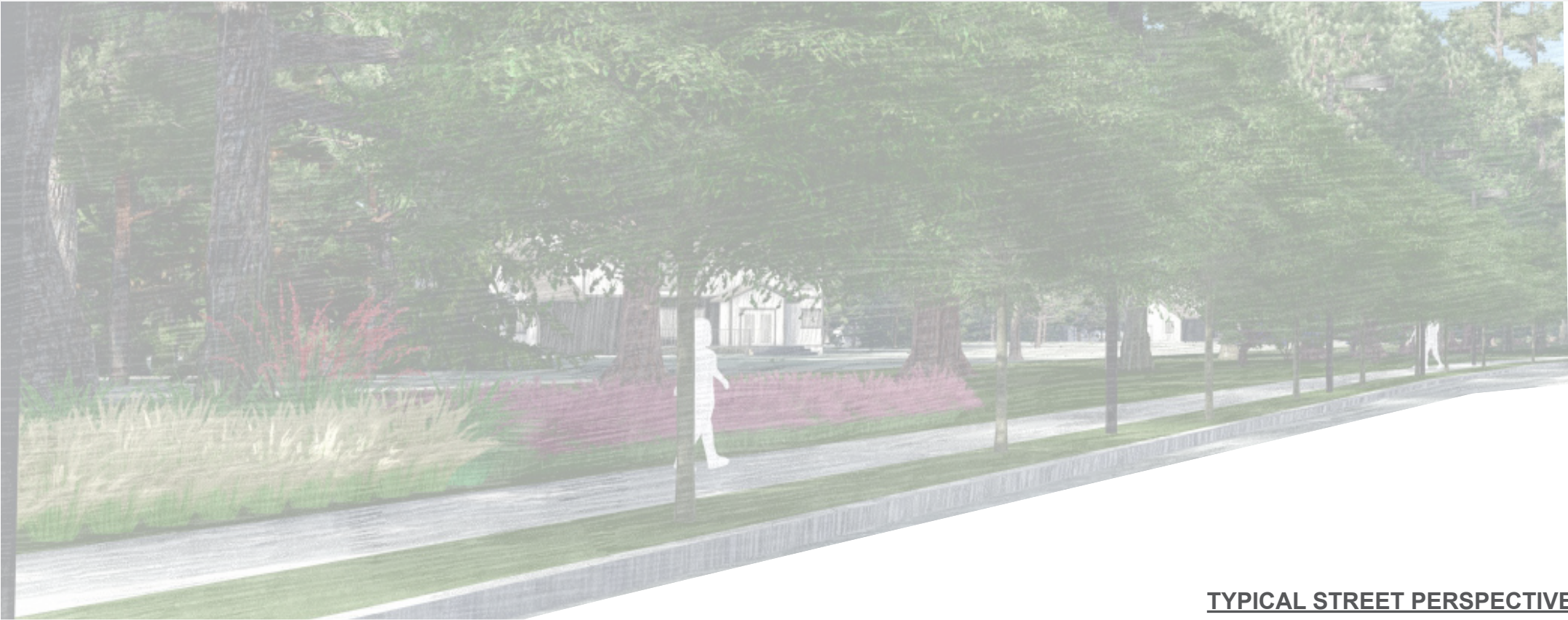


Yucca Filamentosa
Spanish Sword



hemerocallis x 'sunscape'TM
Sunscape Daylily

Planting Design



TYPICAL STREET PERSPECTIVE

SHADE TREE



Quercus shumardii
Shumard Oak

ORNAMENTAL TREE



Sophora secundiflora
Texas Mountain-Laurel

BIG SHRUB



Myrica pusilla
Dwarf Southern Wax Myrtle



Ilex Vomitoria Nana
Dwarf Yaupon



Ilex Glabra
Inkberry



Leucophyllum frutescens
Texas Sage

ORNAMENTAL GRASS



Bouteloua gracilis 'Blonde Ambition'
Blue Grama



Liriope muscari 'Emerald Goddess'
Liriope



Nassella tenuissima
Mexican Feather Grass



Muhlenbergia capillaris 'Pink Flamingos'
Pink Muhly Grass